

Annual Report
Fiscal Year 2023

Bridge
Over
Troubled
Waters

Bridge



Guiding Youth
The Whole Way

Dear Friends,

Another year together, full of memories made in both your family and ours.

It's always busy when you're working with 2,000 teenagers, but we have accomplished a lot this year.

- We added 24 Safe Place sites to our network, creating more spaces where youth under 18 can get help and connect to Bridge.
- We renovated three floors at our West St. location, providing bright new spaces for our Behavioral Health Center, Education & Career Program, and Emergency Residence.
- We led four research studies and clinical trials that examined different aspects of the youth homelessness experience and proposed new interventions to better serve our youth. Our research was recently published and selected as an Editor's Choice article in the *Journal of the American Academy of Child and Adolescent Psychiatry*.
- We expanded our independent living program by purchasing Brunson Liberty House. Located right next to our other Brighton location, it will be the next step for many youth in their journey towards self-sufficiency. Once renovated, it will be a bright and welcoming space where youth can live while they work or continue their education.

However, when you work with a growing population, every night brings a new challenge to be faced. Bridge is responsible for many youth, and we want to ensure we can continue to provide for all. This is why increasing our capacity is critical. With this in mind, we hope to soon expand by investing in new real estate, so we can help even more youth find safety and stability.

As we take on all that this year brings us, we are thankful to have your support and dedication to Bridge. Together, we will continue to help our young people thrive and guide them on their paths home.

Let the kids be with you,



Elisabeth Jackson

bridgeotw.org
[@bridgeotw](https://twitter.com/bridgeotw)

47 West Street
Boston, MA 02111
617 423 9575





2023 Impact Report

The story of every youth at Bridge is unique, but together they make up a greater story. This data proves the success of the Bridge model in reaching as many youth as possible, providing youth with the confidence and the skills to be self-sufficient, and supporting their housing needs until each individual can be out on their own, living and thriving independently. The Bridge model works because it truly guides youth The Whole Way from homelessness to hope.



Prevention & Intervention

Bridge's Prevention and Intervention services are geared towards reaching the largest number of Boston's homeless, at-risk, and runaway youth as possible. We are committed to getting the word out about Bridge, providing safe access points for youth to connect with us, and preventing runaways and homelessness wherever possible. This is the first line of contact between youth and Bridge, so it is important for us to provide a welcoming, warm, and safe environment from the start.

844

youth met with our **Street Outreach team** across double the number of strategic locations as last year.

24

new Safe Place sites added to our network, increasing **safe access points** for runaways under age 18 by

133%.

86%

of youth under 18 **were reunited with family or received preventative services** to keep them from running away.

622

youth new to Bridge completed the **full intake process**, up

41%.



Skills for Self-Sufficiency

The next part of the Bridge journey is helping youth to develop skills for self-sufficiency. This includes helping each individual learn to manage their physical and mental wellbeing, to handle their finances, and to maintain consistency at school or at a job. These skills are foundational for their future success as independent, functioning adults. Many of these youth, who have been abandoned and neglected by the adults in their lives, are receiving this guidance for the first time.

2,146

total behavioral health therapy sessions provided to youth who traditionally do not have access to this service.

68%

of youth who transitioned from Bridge were assessed as being **able to manage both their physical and mental health needs.**

66%

of youth who transitioned from Bridge were assessed as being able to **manage a budget and perform household management activities.**

88%

of youth housed in independent living **were employed.**



Housing & Support

Housing itself is a crucial part of success for young adults facing homelessness. Bridge provides both supportive housing and independent housing options, depending on each individual youth's level of independence and needs. Bridge also helps youth in new housing, setting them up with community support and providing them with ongoing assistance as they make the transition to stable housing.

218

youth supported in Bridge's independent housing programs.

60

youth supported in Bridge's transitional living programs.

84%

of youth in Bridge's transitional living programs **moved into stable housing.**

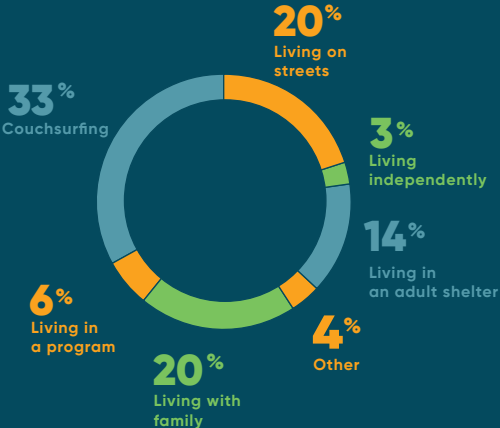
70%

of youth who transitioned into independent living went to **market-rent housing.**

Our Youth

Our youth come from a variety of backgrounds and situations which have led them to youth homelessness, but certain communities continue to be disproportionately affected.

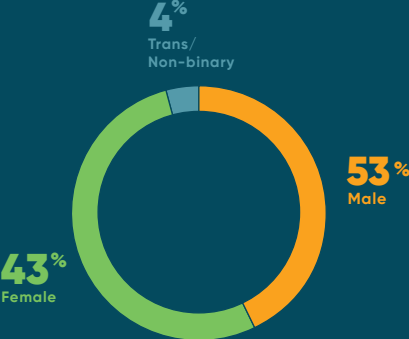
Living Situation at Intake



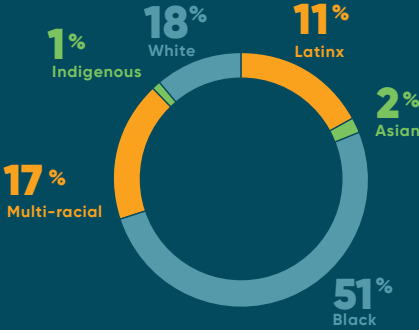
Age



Gender



Racial & Ethnic Identity

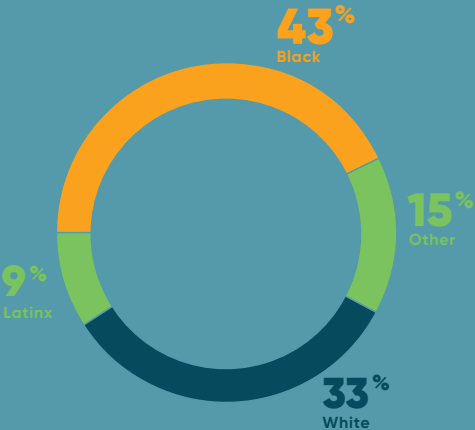


Our Team

The diversity of our team reflects the diversity of the young people we serve, as well as our commitment to representing a wide range of cultural backgrounds and experiences.

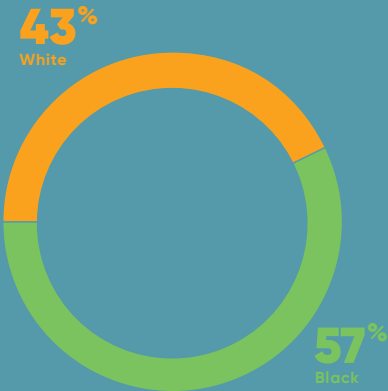
Team

59% Male
41% Female



Leadership

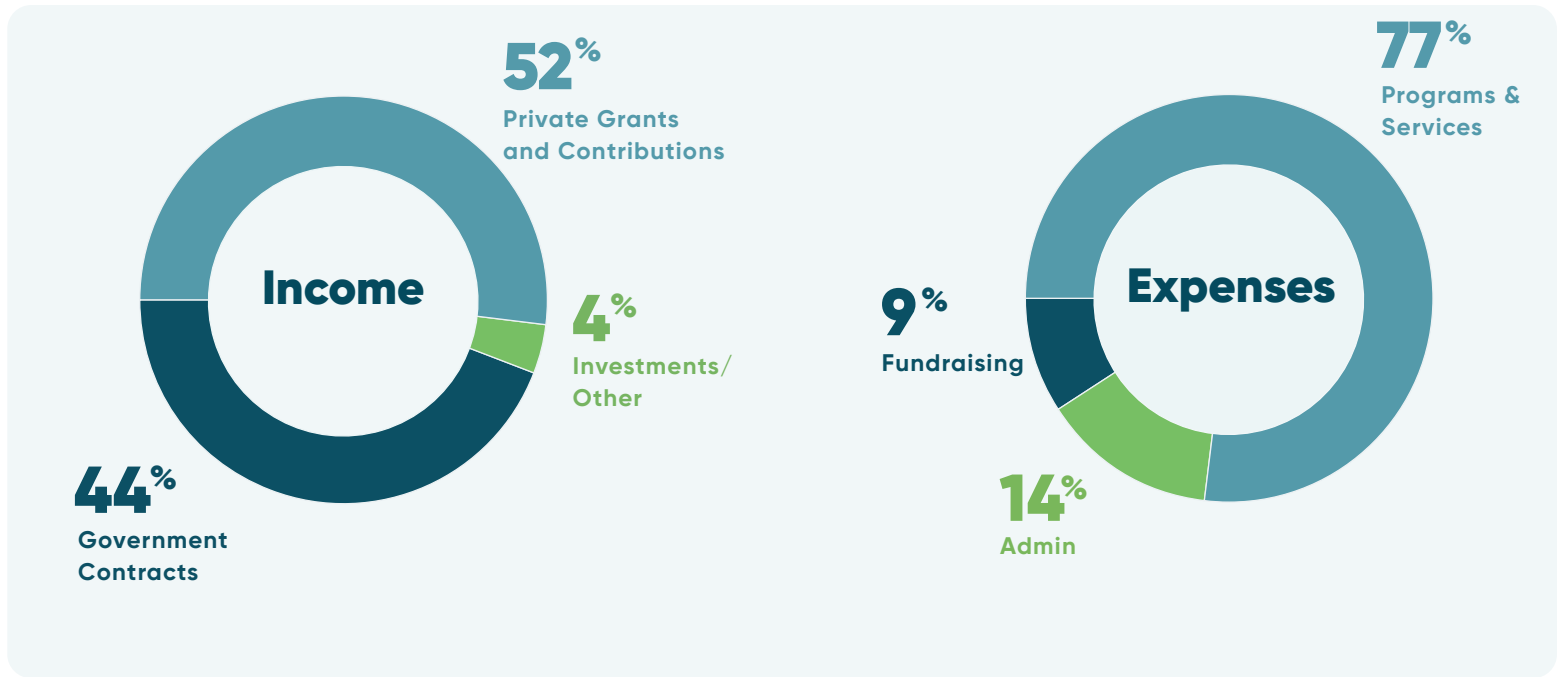
43% Male
57% Female



Bridge Fiscal Year 2023 Financials

Bridge Over Troubled Waters is supported by generous individuals, foundations, and corporations, as well as through government grants and contracts. We thank them for believing in our youth and in the work that we do.

Income & Expenses from July 1, 2022 - June 30, 2023



Income

Private Grants & Contributions	\$6,132,513
Government Grants & Contracts	\$5,205,303
Investment / Other	\$493,551

Total Income **\$11,831,367**

Net Realized & Unrealized Gains (\$302,261)

Total Revenue & Other Support **\$12,133,628**

Expenses

Programs	\$8,897,694
Administration	\$1,633,673
Fundraising	\$991,397

Total Expenses **\$11,552,764**

Bridge is grateful for the individuals, foundations, and organizations who have supported our "A Path Home for Every Youth" comprehensive funding campaign. The above income includes campaign gifts that will invest in Bridge's infrastructure, strengthen our services, and grow our programs to better respond to the increasing needs of a greater number of youth. We are actively fundraising for this campaign during the five-year period between FY21 and FY25.